



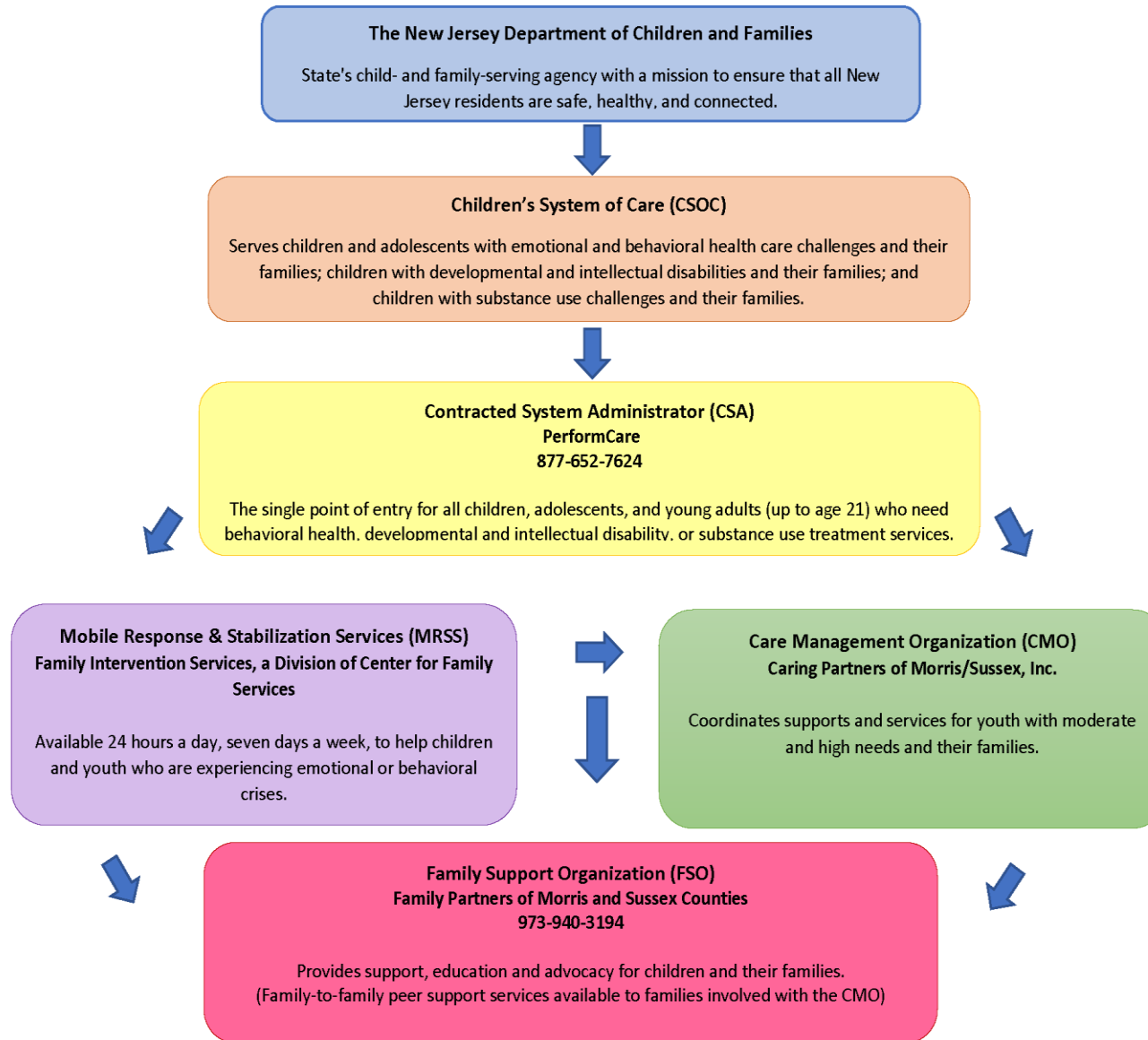
C A R I N G P A R T N E R S
O F M O R R I S & S U S S E X

Care Management Organization

200 Valley Road, Suite 406
Mount Arlington, NJ 07860
973-770-5505

Who We Are

- ▶ Caring Partners is a non-profit care management organization
- ▶ We are part of the New Jersey Children's System of Care
- ▶ We work with youth under the age of 21 who have complex emotional and behavioral challenges, developmental/intellectual disabilities and substance use needs.
- ▶ Using the “Wraparound Process” we help families build on their strengths to develop individualized service plans to coordinate services, resources and supports
- ▶ Our goal is to keep youth in their homes, their schools, and their communities.



Accessing Services



- ▶ The parent or legal guardian can contact PerformCare at 1-877-652-7624 to determine if their child is eligible for services
- ▶ PerformCare will ask questions to determine if immediate assistance is needed
- ▶ PerformCare will link family to a Clinician to complete a Needs Assessment to determine if youth needs more intensive supports, such as a care management organization
- ▶ If CMO referral is made, family will be contacted by a Care Manager to initiate services

Role of Care Manager



- ▶ Helps youth and family develop a crisis plan
 - ▶ Staff available for 24 hour on-call consultation
- ▶ Facilitates the Child and Family Team Meetings to develop Individualized Service Plans (ISP)
- ▶ Face-to-Face contact with youth and family
- ▶ Links and refers to identified services/resources
- ▶ Monitors progress towards goals

What is a Child and Family Team (CFT)?

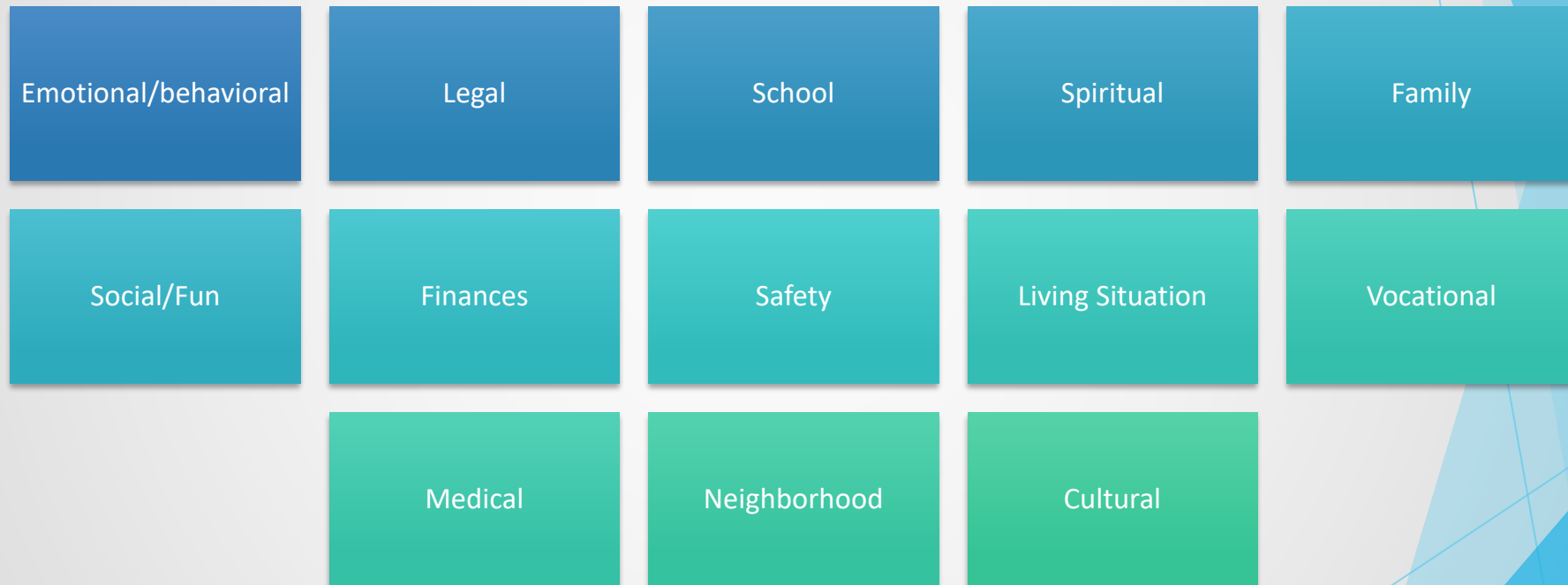
- ❑ Comprised of both “natural” and “formal” supports who are integrally involved with the family and play an important role in the child’s life. These supports include, but are not limited to:

- Family Member
- Family Friend
- Teacher
- Clergy
- Coach
- Neighbor
- Therapist
- DCP&P Worker
- Probation Officer
- School Counselor



- ❑ Helps families help themselves and gives them the support they need by coming together to develop, refine, and execute an Individualized Service Plan (ISP) that is based on wraparound values and strength-based planning.

Life Domains



Developing the Individual Service Plan (ISP):



- ▶ Creating the Family Vision
 - ▶ The focal point of the plan
- ▶ Identifying the strengths of each team member
- ▶ Identifying the needs
- ▶ Prioritizing the needs
 - ▶ Each life domain is discussed to ensure that all needs are identified and prioritized.
 - ▶ Mandated services are addressed first, such as DCP&P and Probation.
- ▶ Developing strategies
- ▶ Developing a strategy to follow-up on the plan

Community Collaboration



www.morrissussexresourcenet.org

Provides wide range of information about support, resources and services for families in Morris and Sussex counties

Any Questions?



Contact

Maria Augustowicz, LSW

Community Resource Manager

Phone: 973-770-5505 ext. 102

Email: maugustowicz@caringpartnerscmo.org

Kim Batistoni

Community Resource Assistant

Phone: 973-770-5505 ex. 2112

Email: kbatistoni@caringpartnerscmo.org